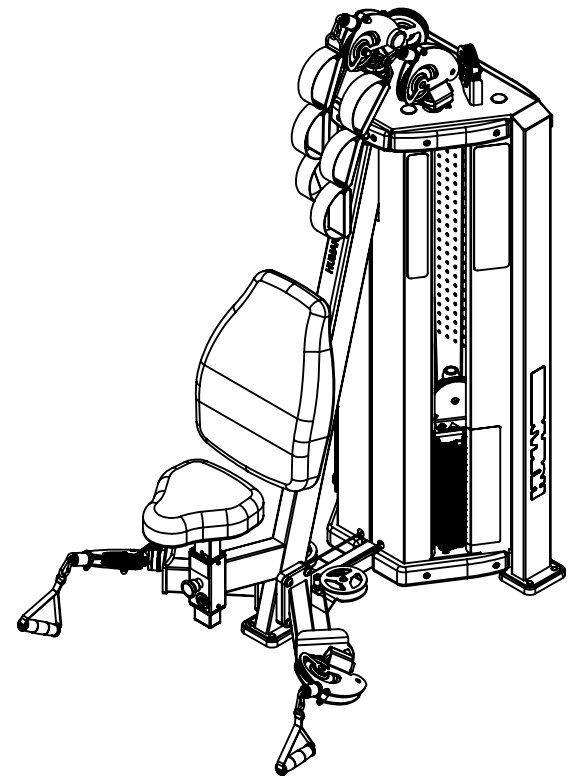
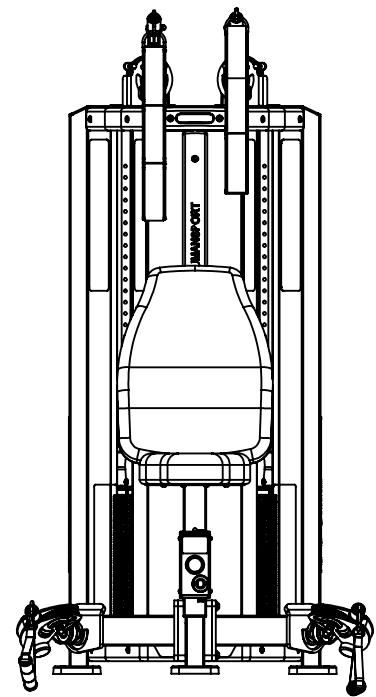
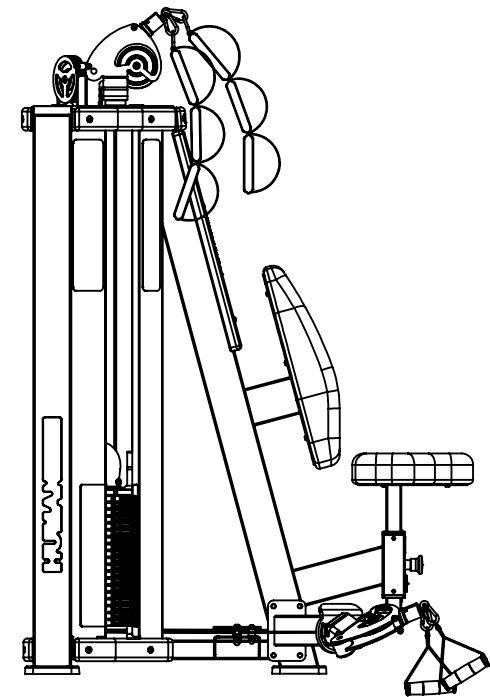
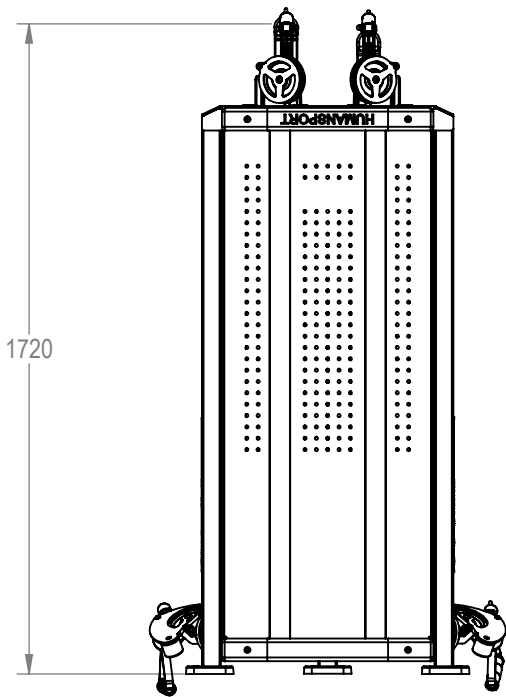
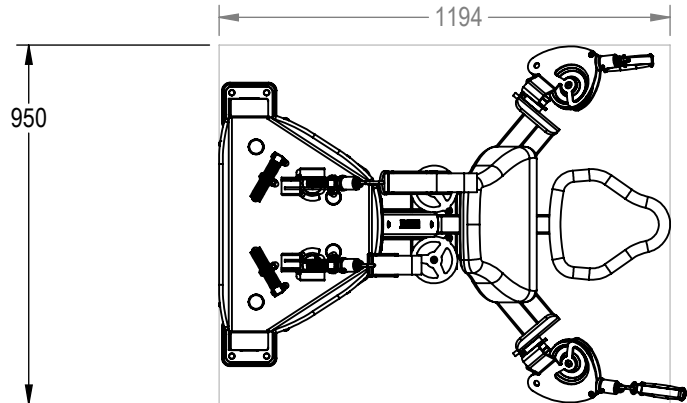


NOTES:

REVISION HISTORY				
REV	DATE	DESCRIPTION	ECO	BY
A	-	DOCUMENT RELEASE	-	-
B	8/23/2013	CHANGE TO LOCK N LOAD, CHANGE SHROUDS, UPDATE BOM TEMPLATE AND NUMBERING	14338	CRB



**DOCUMENT STATUS:  
RELEASE**

NOTICE OF PROPRIETARY INFORMATION  
THIS DOCUMENT SHALL NOT BE REPRODUCED NOR SHALL THE INFORMATION CONTAINED HEREIN BE USED BY OR DISCLOSED TO OTHER EXCEPT AS EXPRESSLY AUTHORIZED BY CORE HEALTH & FITNESS, LLC.

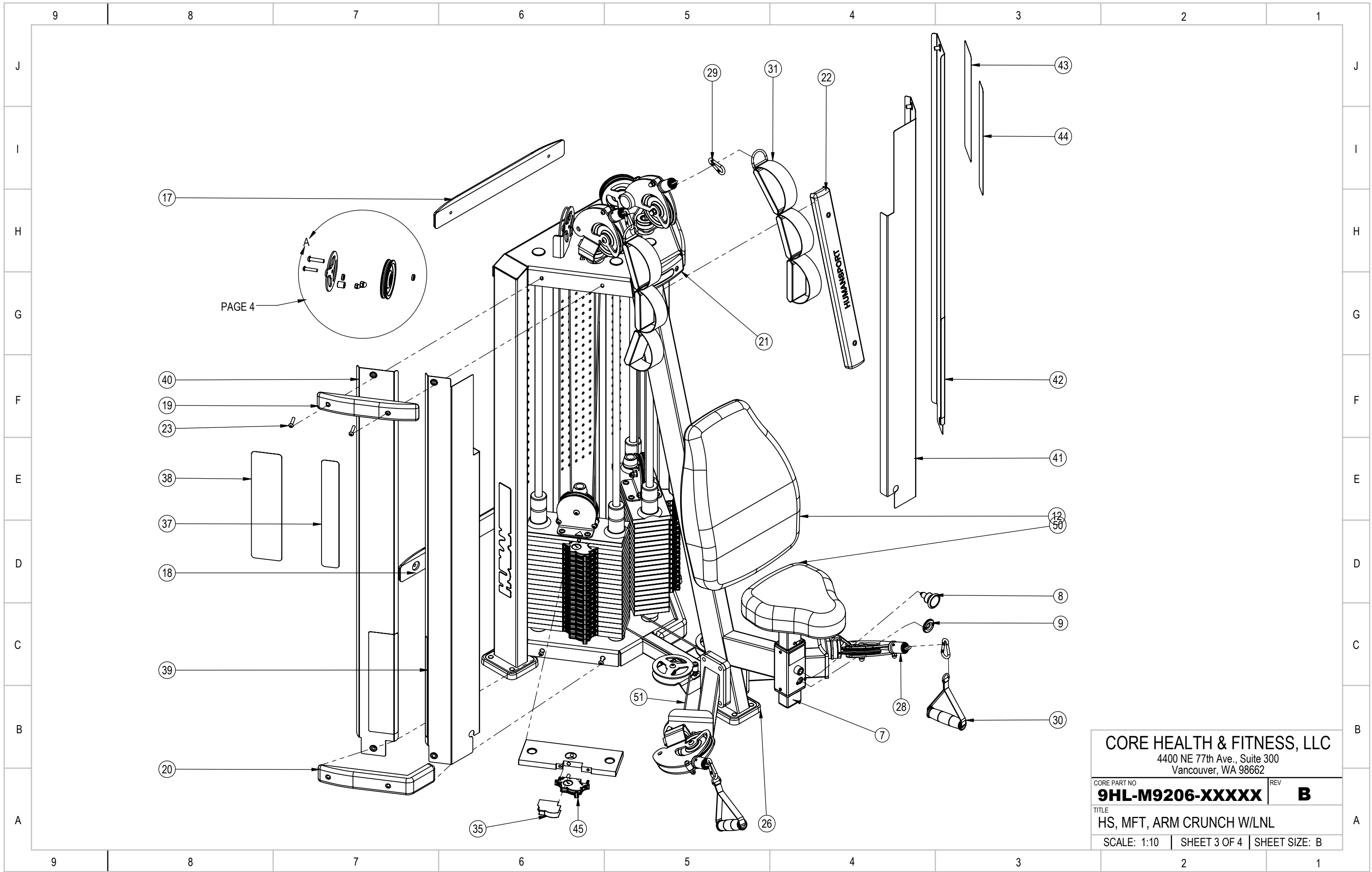
MATERIAL SEE BOM		THIRD ANGLE PROJECTION 		CORE HEALTH & FITNESS, LLC 4400 NE 77th Ave., Suite 300 Vancouver, WA 98662	
FINISH N/A		DRAWN CRB	DATE 8/23/2013	CORE PART NO <b>9HL-M9206-XXXXX</b>	REV <b>B</b>
VENDOR:		P/N:		TITLE HS, MFT, ARM CRUNCH W/LNL	
		U.O.M. MM	SCALE: 1:20	SHEET 1 OF 4	SHEET SIZE: B

9	8	7	6	5	4	3	2	1
ITEM NO.	PART NUMBERS	DESCRIPTION	QTY.					
J	4	730-2573	ASSY, BRACKET, PULLEY, HS, RH	2				J
	5	730-2574	ASSY, BRACKET, PULLEY, HS, LH	1				
	7	730-0135	SLEEVE	1				
	8	730-0128	PIN, ASSY, SEAT, ADJ., HS	1				
I	9	730-0134	COLLAR, POST ADJ., VIEW HOLE. HS	1				I
	10	730-0135	SLEEVE, POST SHAFT, HS	2				
	12	730-0124-XX	PAD, BACK REST, HS	1				
	17	020-6986-X	TRIM, WOOD, TOP, BACK, HS	1				
	18	020-6987-X	TRIM, WOOD, BOTTOM, BACK, HS	1				
H	19	020-6983-X	TRIM, WOOD, UPPER, HS	2				H
	20	020-6982-X	TRIM, WOOD, BOTTOM, HS	2				
	21	020-6985-X	TRIM, WOOD, TOP, CENTER, HS	1				
	22	020-6984-X	TRIM, WOOD, CENTER, HS	1				
	23	730-3030	BOLT, GENERAL, HUMAN SPORT	20				
G	26	020-6988	PAD, RUBBER, FEET, HS	3				G
	29	730-0143	CLIP, METAL, HS	4				
	30	730-0126	GRIP, HANDLE, HS	2				
	31	730-0127	TRAP, CHRUNCH, HS	2				
	32	050-2007	LABEL, HUMAN SPORT, 41.1 X 5.0	2				
	34	050-2012	LABEL, PULL, HS	1				
F	35	730-3029	STICKER, LOCKNLOAD, WEIGHT INCREMENT, HUMAN SPORT	2				F
	37	730-3028	STICKER, RIGHT SHROUD, INSIDE, ARM CRUNCH, HUMAN SPORT	1				
	38	730-3027	STICKER, RIGHT SHROUD, OUTSIDE, ARM CRUNCH, HUMAN SPORT	1				
E	39	730-3026	SHROUD, RIGHT, INSIDE, ARM CRUNCH	1				E
	40	730-3025	SHROUD, RIGHT, OUTSIDE	1				
	41	730-3021	INSIDE, LEFT, SHROUD, ARM CRUNCH, HUMAN SPORT	1				
	42	730-3022	SHROUD, OUTSIDE, LEFT, HUMAN SPORT	1				
	43	730-3023	STICKER, ARM CRUNCH, OUTSIDE LEFT SHROUD	1				
D	44	730-3024	STICKER, ARM CRUNCH, INSIDE LEFT SHROUD	1				D
	45	731-1423-KT	KIT, ASSY, SWITCH, LNL, STRAIGHT	38				
	49	730-0142	PULLEY, ASSY, HS	2				
	50	730-0123-XX	SEAT, PAD, HS	1				
C	51	130-1751	CABLE	2				C
	52	730-3035	SPACER, PULLEY BEARING, HUMAN SPORT	12				
	53	730-3031	OUTER BRACKET, PULLEY, HUMAN SPORT	6				
	54	730-3032	SPACER, PULLEY BRACKET, HUMAN SPORT	6				
	55	730-3020	PULLEY BOLT, HUMAN SPORT	6				
B	56	120-3301	WASHER, M10	6				B
	57	730-3033	ACORN NUT, GENERAL, HUMAN SPORT	6				
	58	730-3034	ACORN NUT, PULLEY BOLT, HUMAN SPORT	6				

**CORE HEALTH & FITNESS, LLC**  
4400 NE 77th Ave., Suite 300  
Vancouver, WA 98662

CORE PART NO	REV
<b>9HL-M9206-XXXXX</b>	<b>B</b>
TITLE	
HS, MFT, ARM CRUNCH W/LNL	
SCALE: 1:25	SHEET 2 OF 4   SHEET SIZE: B

9	8	7	6	5	4	3	2	1
---	---	---	---	---	---	---	---	---

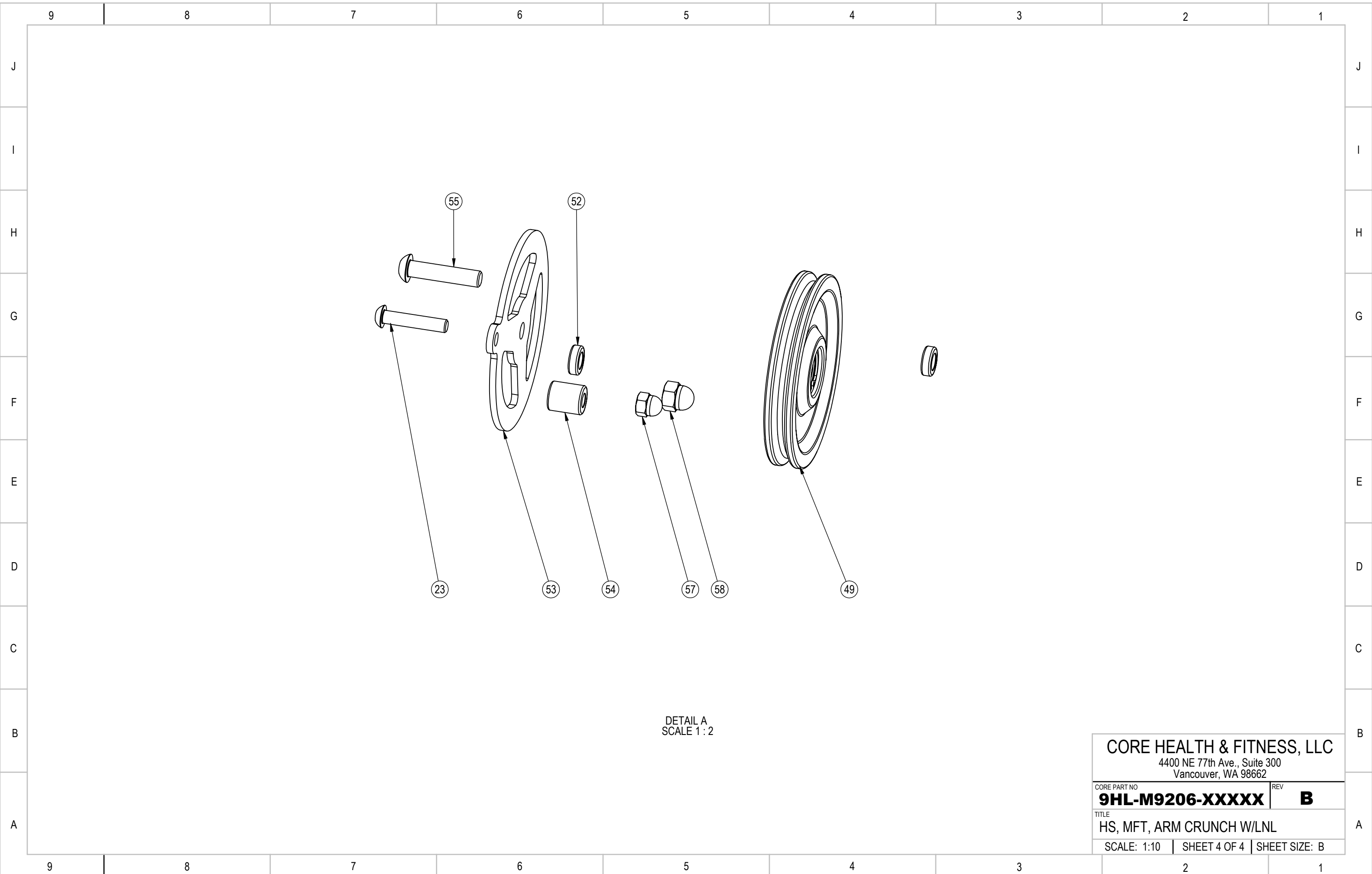


CORE HEALTH & FITNESS, LLC  
 4400 NE 77th Ave., Suite 300  
 Vancouver, WA 98662

CORE PART NO. **9HL-M9206-XXXXX** | REV **B**

TITLE  
 HS, MFT, ARM CRUNCH W/LNL

SCALE: 1:10 | SHEET 3 OF 4 | SHEET SIZE: B



DETAIL A  
SCALE 1:2

<p><b>CORE HEALTH &amp; FITNESS, LLC</b>          4400 NE 77th Ave., Suite 300          Vancouver, WA 98662</p>		
<p>CORE PART NO  <b>9HL-M9206-XXXXX</b></p>	<p>REV  <b>B</b></p>	
<p>TITLE  <b>HS, MFT, ARM CRUNCH W/LNL</b></p>		
<p>SCALE: 1:10</p>	<p>SHEET 4 OF 4</p>	<p>SHEET SIZE: B</p>